



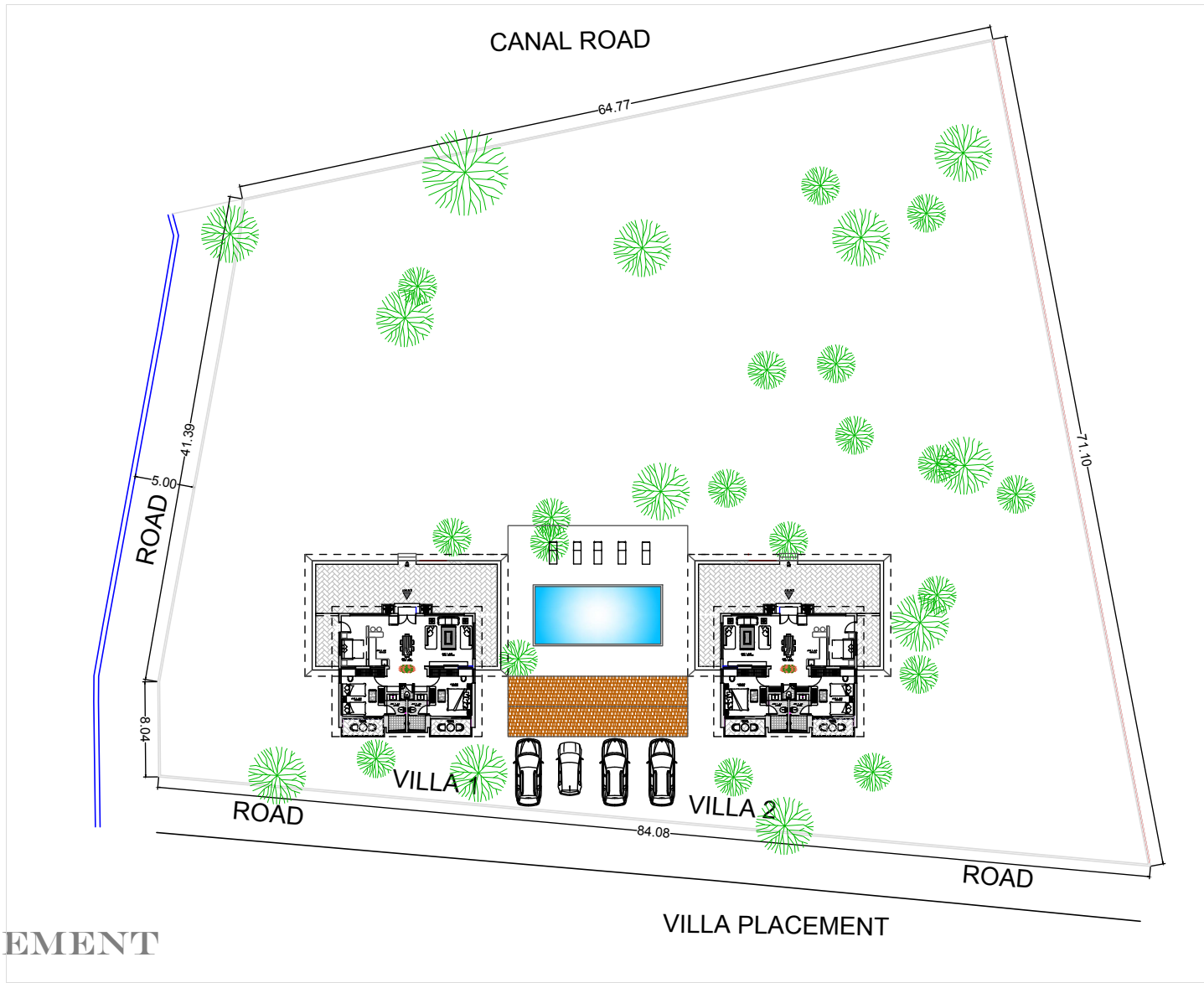
FARMHOUSES PROJECT

HUMGAON, KARJAT
MAHARASHTRA





ACTUAL SITE



VILLA PLACEMENT

VILLA PLACEMENT



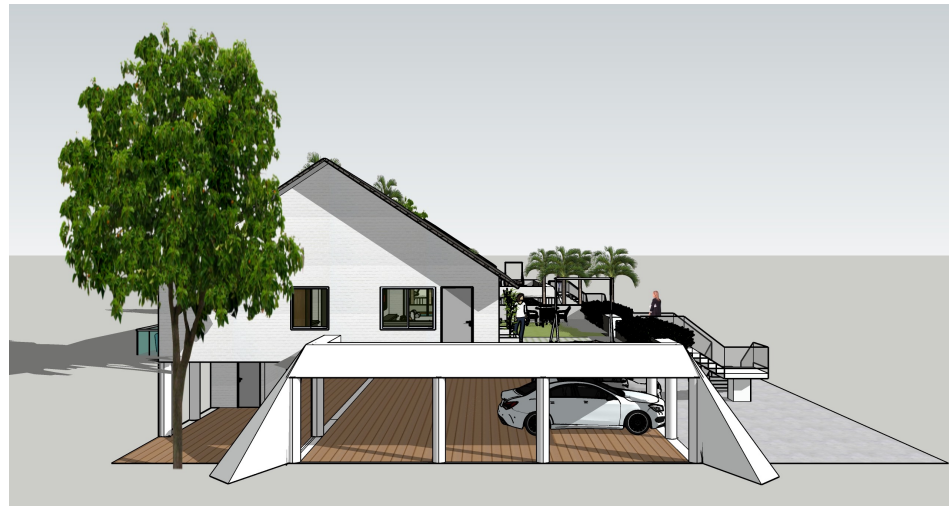
PLAN



FRONT ELEVATION



BACK ELEVATION



SIDE VIEWS



ISOMETRIC VIEW



VIEWS



VIEWS



FRONT VIEW





VIEWS



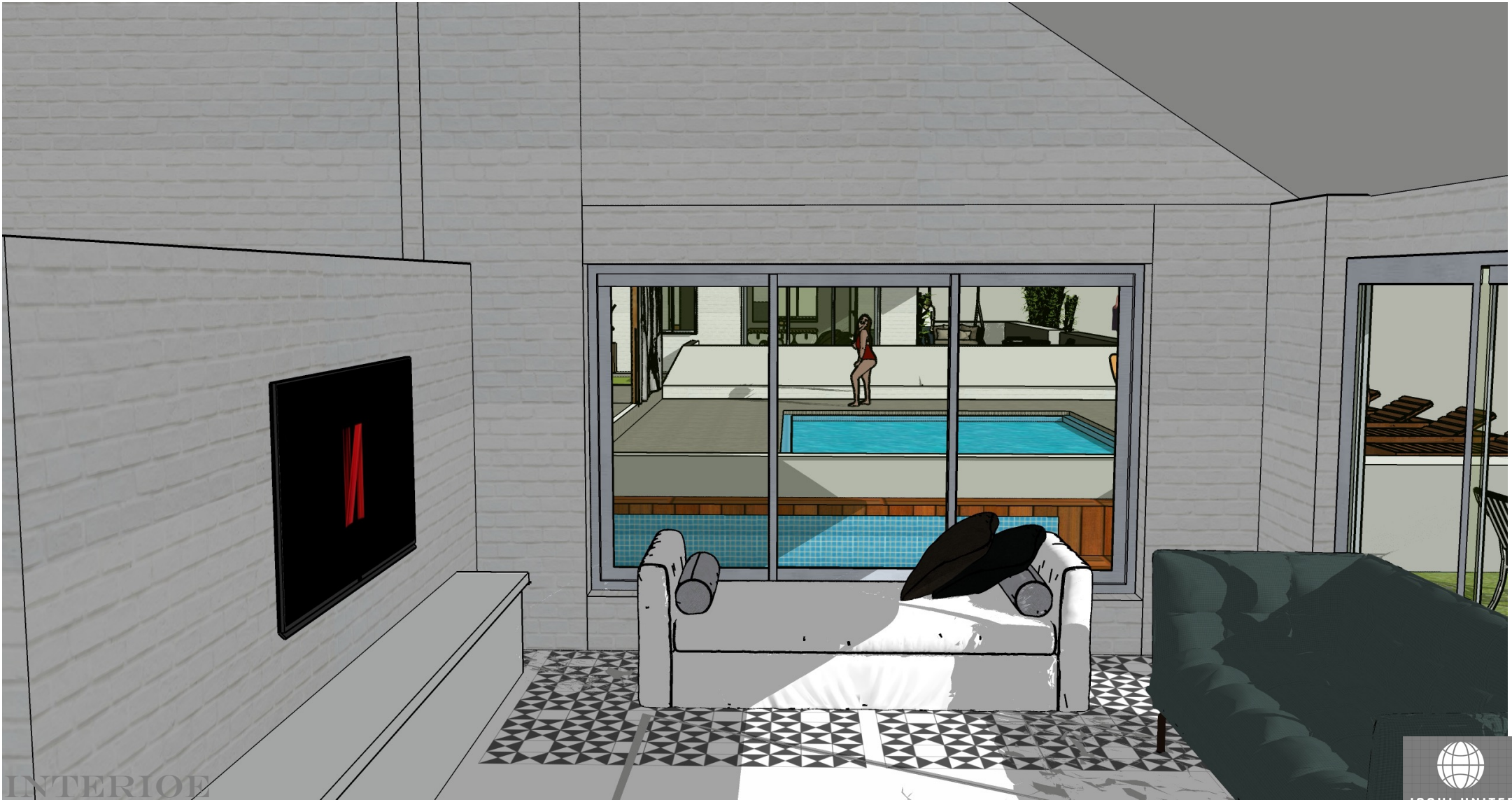
POOL VIEW



POOL VIEW



POOL VIEW



INTERIOR





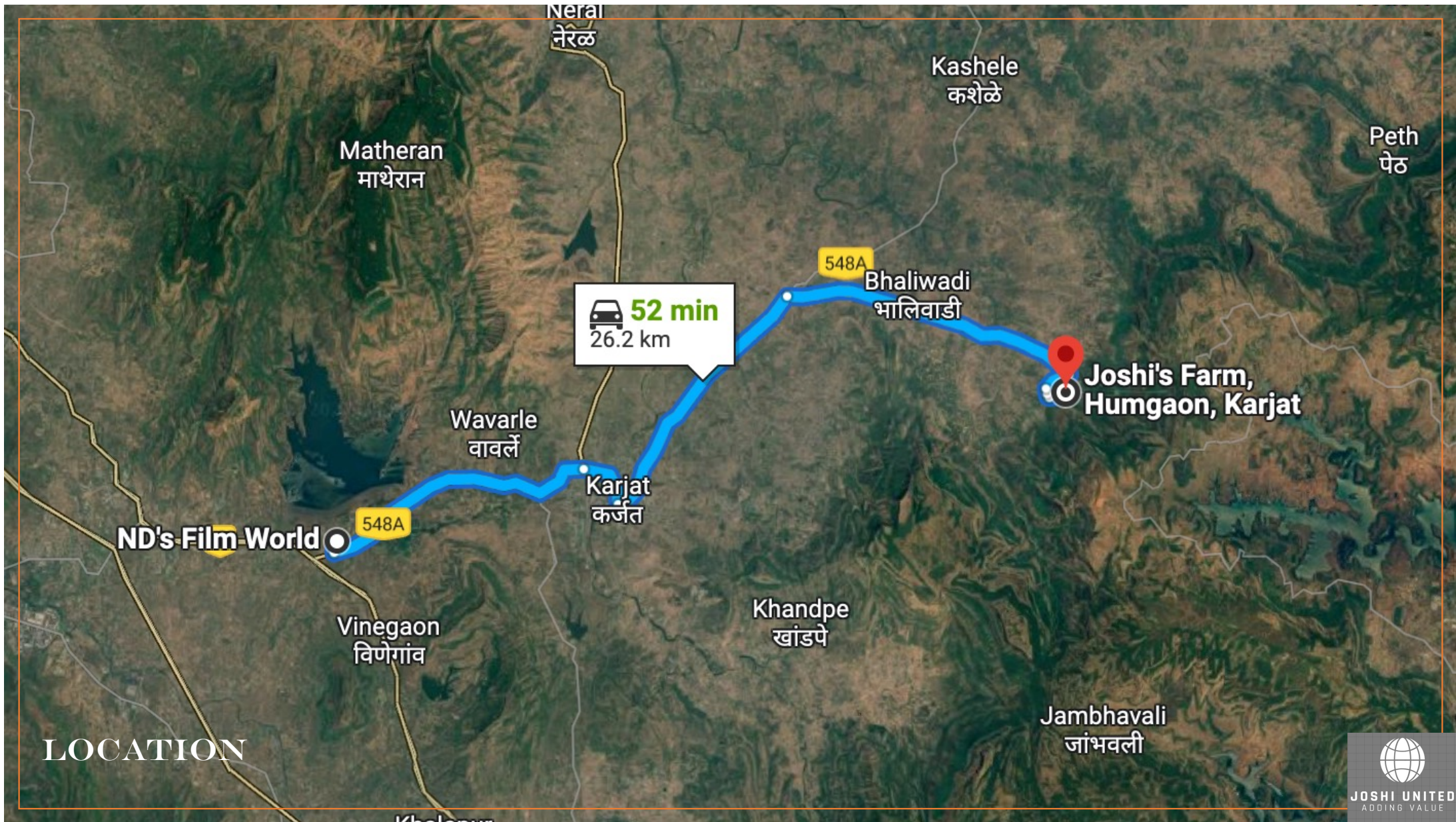
VIEWS



VIEWS



VIEWS



LOCATION

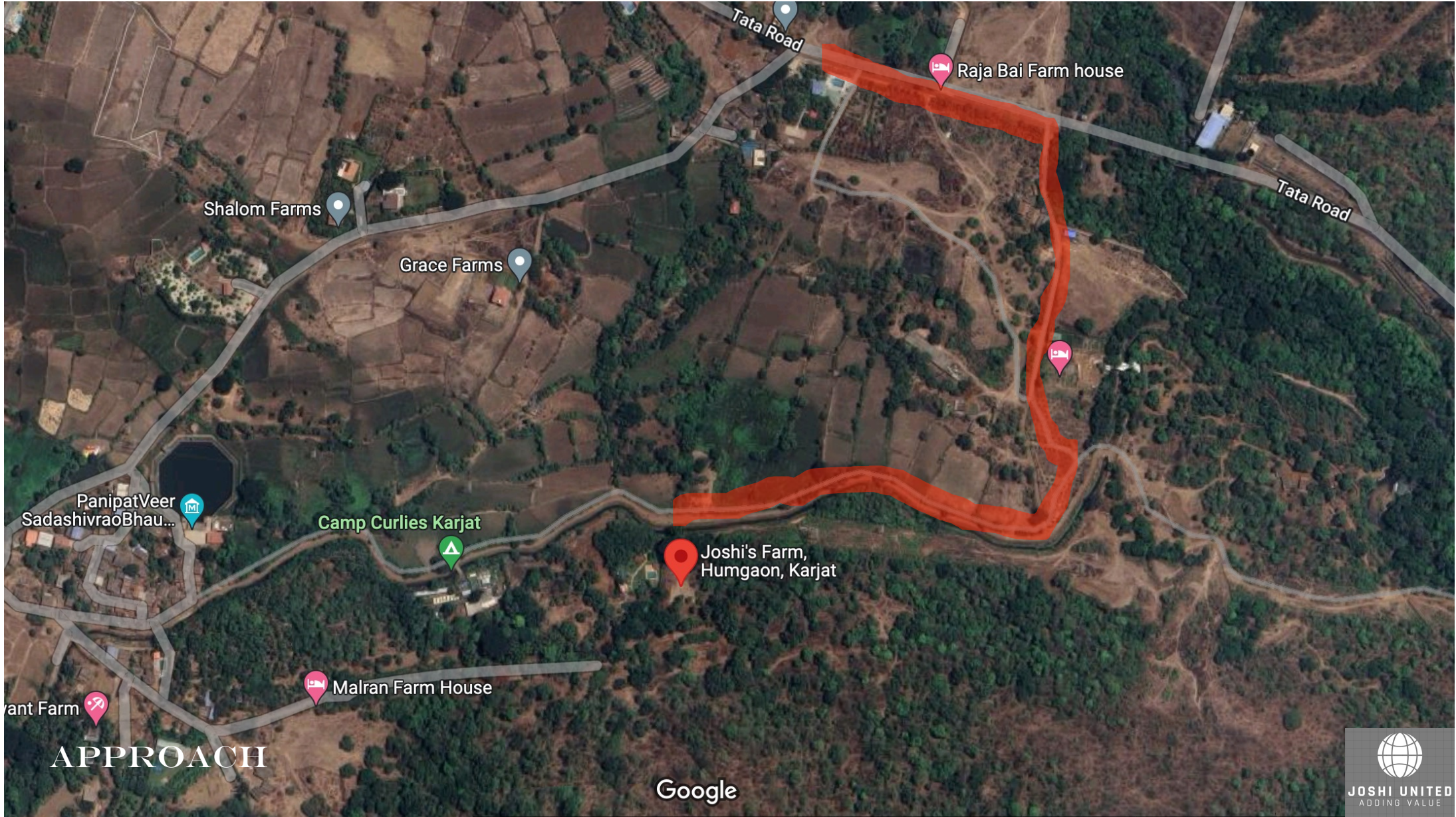


The Forest Hill
View (Manali)

Joshi's Farm,
Humgaon, Karjat

LOCATION

Google



APPROACH

Google

WHY KARJAT ?

PARAMETERS	KARJAT	LONAVALA	MATHERAN
Population Density	400	1464	730
Air Quality Index	8	95	85
Distance from Mumbai	68 kms	90 kms	88 kms
Travel Time from Mumbai	90 mins	130 mins	170 mins
Eco- Sensitive Zone	✓	✗	✓
Infrastructure Boost	✓	✗	✗
Livability	Unhidden Gem	Over Commercialized	Accessibility Issue

PROJECT DETAILS

SPACIOUS TWO BEDROOM VILLA ON STILT WITH POOL
TWO ATTACHED BATHROOMS & 1 POWDER ROOM
DRAWING, DINING, KITCHEN
WASH & UTILITY AREA
LARGE DECK OVERLOOKING THE SCENIC CANAL AND HILLS
GREENERY ALL AROUND, QUIET AND PEACEFUL
BEAUTIFUL COTTAGE DESIGN
FULLY GROWN ALPHONSO MANGO AND CASHEW TREES
SWIMMING POOL WITH BREAKOUT AREA AND BAR
JUST THE RIGHT PLACE FOR YOU AND YOUR LOVED ONES

END

For Enquiries
aaryan.ajay.joshi@gmail.com

